

AMES SHOVEL WORKS

National Trust for Historic Preservation 2009 List of 11 Most Endangered Historic Sites



Workers in the Long Shop



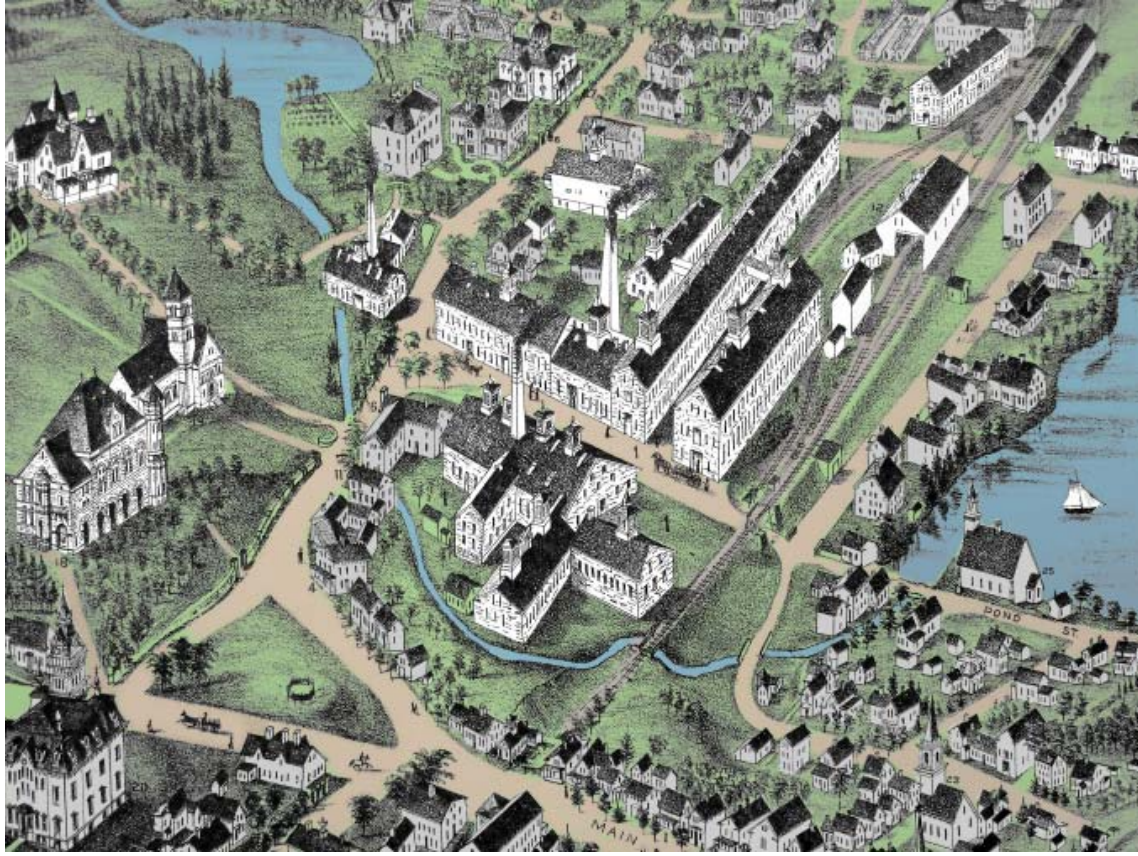
The Steam Hammer Shop



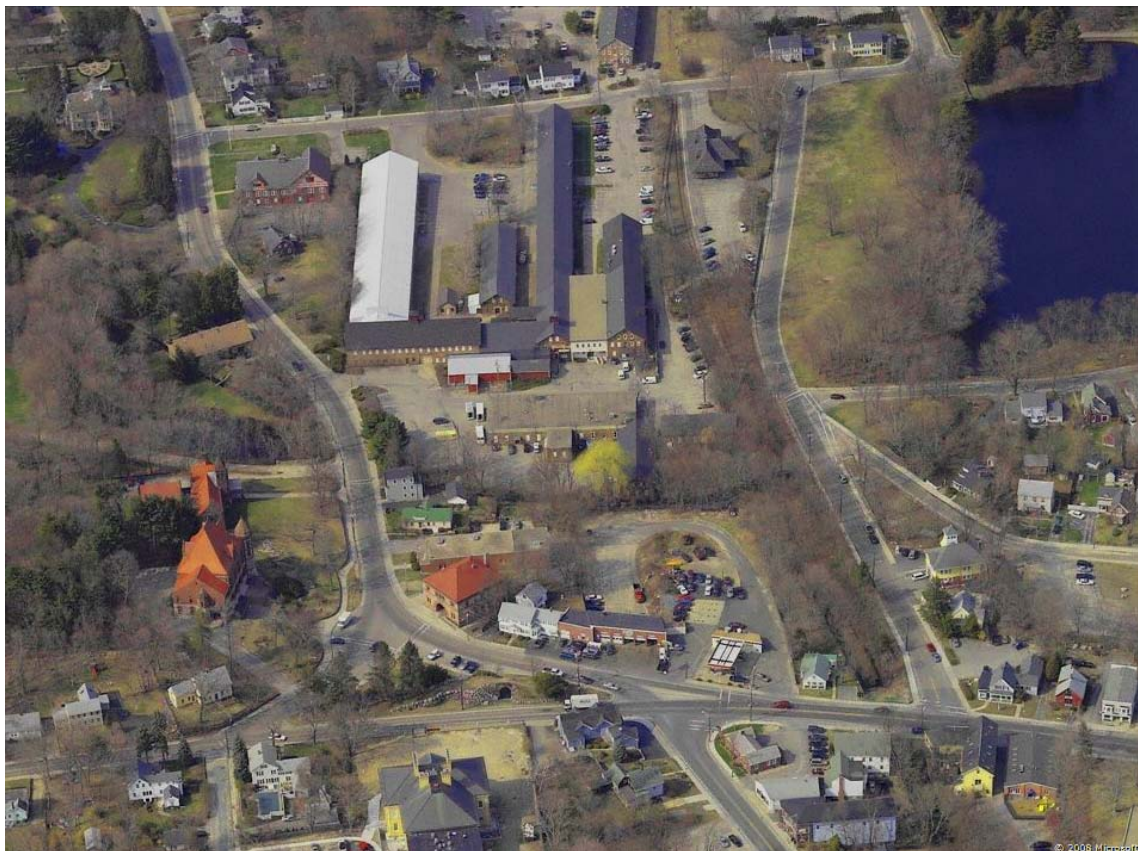
The Oliver Ames & Sons Shovel Company in front of the Long Shop

AMES SHOVEL WORKS

National Trust for Historic Preservation 2009 List of 11 Most Endangered Historic Sites



1881 View of North Easton



2009 View of North Easton

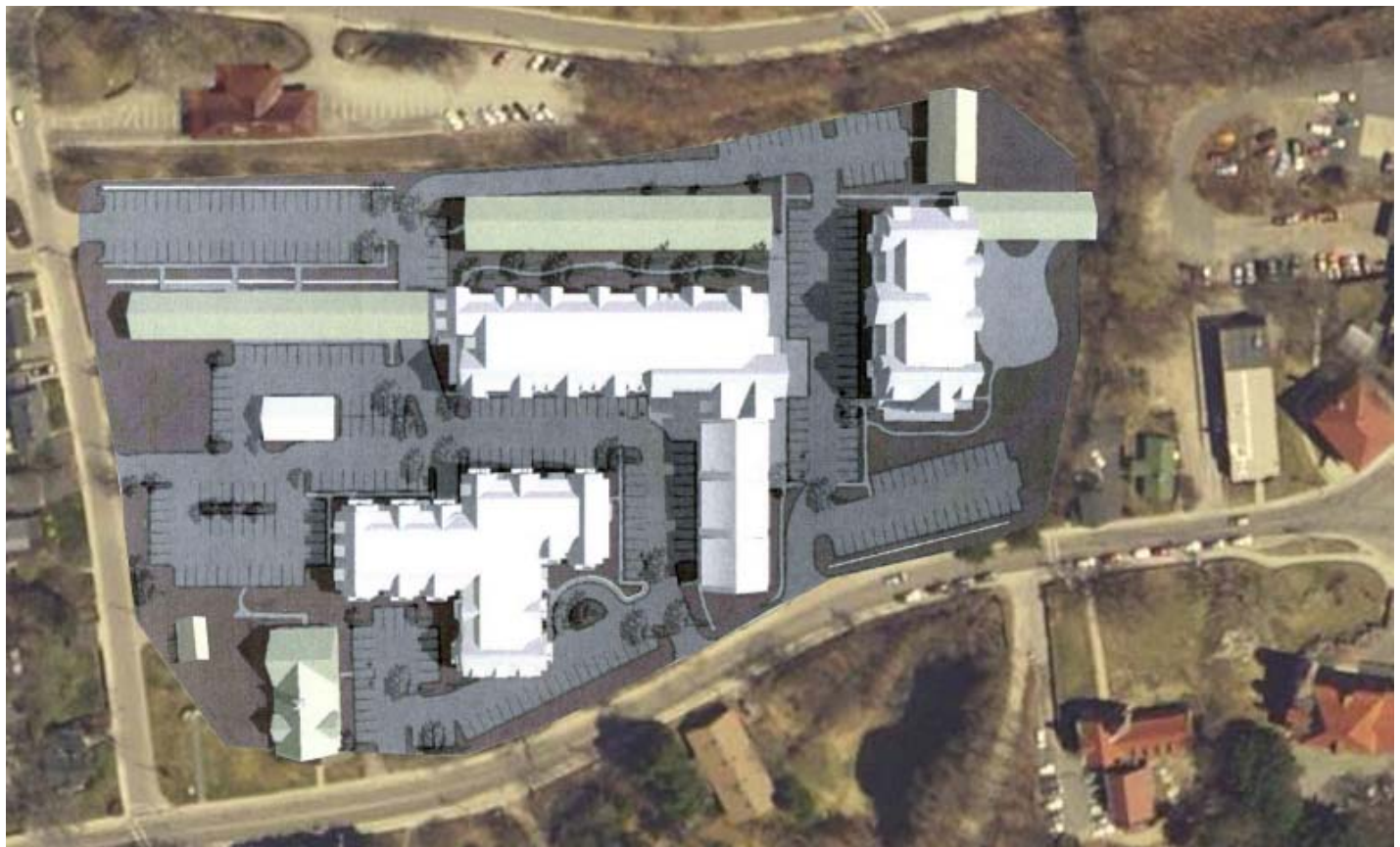
Historic View courtesy of the Easton Historical Society

AMES SHOVEL WORKS

National Trust for Historic Preservation 2009 List of 11 Most Endangered Historic Sites



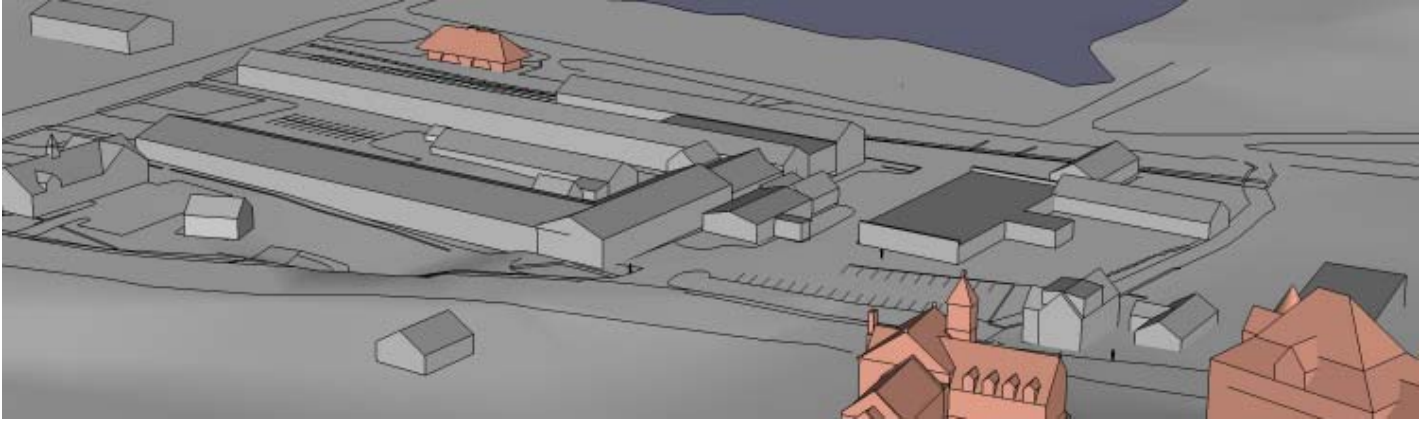
Existing Conditions



Proposed Development

AMES SHOVEL WORKS

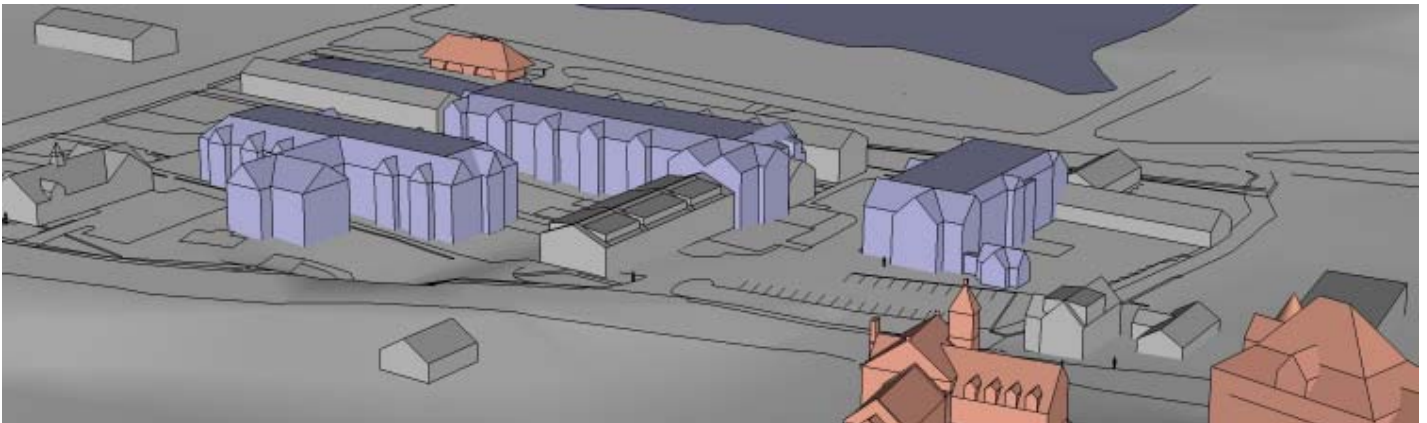
National Trust for Historic Preservation 2009 List of 11 Most Endangered Historic Sites



Existing Conditions

MODEL OF EXISTING CONDITIONS:

By modeling the existing and proposed conditions the independent group, Friends of the Historic Ames Shovel Works at North Easton, studied the visual impact of the proposal and formulated strategies to minimize the impact within economically feasible alternatives.



Proposed Development

MODEL OF PROPOSED DEVELOPMENT:

In addition to the loss of significant structures on the site, the scale of the new construction (seen in blue) overwhelms the other buildings on the site and become more dominant in the surrounding district.



Alternate Scenario

MODEL OF AN ALTERNATE SCENARIO:

The Friends group surveyed the historical significance of the buildings on site and proposed development guidelines. To demonstrate the economic feasibility of the limitations the guidelines set, the Friends group modeled a test scenario using Historic Tax Credits and the Department of Interior's standards for Historic Preservation.

This model (shown in yellow) proved to out perform the development proposed.

AMES SHOVEL WORKS

National Trust for Historic Preservation 2009 List of 11 Most Endangered Historic Sites



**Existing Conditions
Store House (left) and Long Shop (right)**



Proposed Development



**Proposed Development With Parking on 4'
High Leach Field Berm**

Model Images courtesy of the Friends of the Historic Ames Shovel Works at North Easton

AMES SHOVEL WORKS

National Trust for Historic Preservation 2009 List of 11 Most Endangered Historic Sites



Proposed Machine Shop, Long Shop and Steam Hammer Shop



Alternative Scenario: Machine Shop, Long Shop and Steam Hammer Shop

AMES SHOVEL WORKS

National Trust for Historic Preservation 2009 List of 11 Most Endangered Historic Sites

Images of Buildings



Store House - 1870



Long Shop - 1852



Machine Shop - 1857



Oliver Ames Sr.
1779-1863



Antrim Opening Shop - 1868



Steam Hammer Shop - 1853



Antrim Opening & Long Shop



Plate Polishing Shop - 1880



Engine House - 1853



Office & Stable - 1897



Tenement - c. 1840

AMES SHOVEL WORKS

National Trust for Historic Preservation 2009 List of 11 Most Endangered Historic Sites

Other Significant Buildings in the North Easton

National Register Historic District



Oakes Ames Memorial Hall
1881 - HH Richardson



Ames Gate Lodge
1881 - HH Richardson



Oakes Ames Memorial Hall
1881 - HH Richardson



North Easton Bank and Post Office
1904 - Shepley, Rutan & Coolidge



The Rockery Civil War Monument
1883 - FL Olmsted



Old Colony Railroad Station
1884 - HH Richardson



Oliver Ames III High School
1896 - Carl Fehmer



Langwater Estate
1859 - Snell and & Gregerson
FL Olmstead



Unity Close
1862 - Snell and & Gregerson



Mary Ames Frothingham Estate
1912 - Guy Lowell



Unity Church
1875 - John Ames Mitchell
Stained Glass - John LaFarge



Worker's Housing (Reused Sections from the
Original Wood Factory Buildings)



Gardener's Cottage
1884 - HH Richardson



Unity Parsonage
1878 - Ware & Van Brunt