

Printing Date: 9/10/2009
 File: \\hprproj\Boston\101111_00\GIS\Project\Phase2\TechReports\Traffic\RailOptions\GC_Stoughton_Page2.mxd

- Legend**
- MBTA Commuter Rail Station
 - MBTA Commuter Rail
 - - - Town Boundaries
 - Proposed Alternative Alignment
 - ▭ Limit of Work for Proposed Station/Layover Facility
 - ▭ Limit of Permanent Impact for Proposed Rail
 - ▭ Limit of Work for Proposed Traction Power Facility*

- Grade Crossings**
- ⊗ Proposed Grade Crossing
 - ⊗ Existing Grade Crossing to Remain
 - ⊗ Existing Grade Crossing to be Closed
 - Existing Grade Separated Crossing to Remain
 - Proposed Grade Separated Crossing

* Traction power facilities are only required for electric rail alternative

Index Map

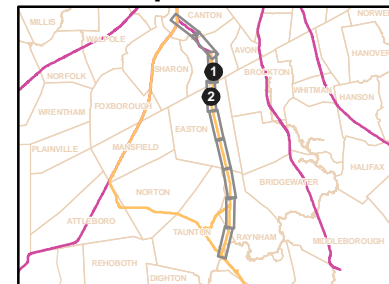
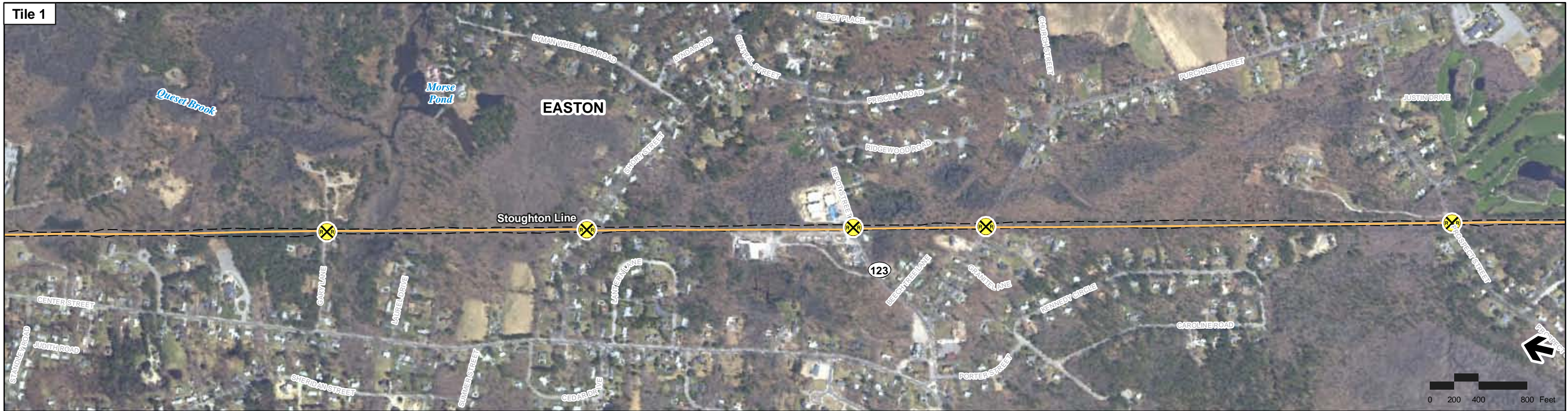


Figure 4.1-66b
 Stoughton Alternatives,
 Stoughton Line
 Grade Crossing Locations



- Legend**
- MBTA Commuter Rail Station
 - MBTA Commuter Rail
 - Town Boundaries
 - Proposed Alternative Alignment
 - Limit of Work for Proposed Station/Layover Facility
 - Limit of Permanent Impact for Proposed Rail
 - Limit of Work for Proposed Traction Power Facility*

- Grade Crossings**
- Proposed Grade Crossing
 - Existing Grade Crossing to Remain
 - Existing Grade Crossing to be Closed
 - Existing Grade Separated Crossing to Remain
 - Proposed Grade Separated Crossing

* Traction power facilities are only required for electric rail alternative

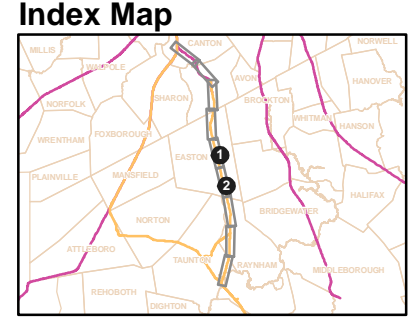


Figure 4.1-66c
Stoughton Alternatives,
Stoughton Line
Grade Crossing Locations